




GCERF works with the Malian government to support the **implementation of its national action plan** and invests in local organisations that **design and run programmes contributing to stability and resilience**.


GCERF-funded activities **engage local stakeholders** to support and **strengthen the capacity of communities** to mobilise, organise and effectively engage with their members and local authorities on topics such as inter-community conflicts resolution, climate resilience social engineering, and socio-economic reinsertion of ex-combatants and prisoners.


Investment Focus

 Strengthening community mobilisation and engagement with local authorities on inter-community conflicts, socio-economic reinsertion of ex-combatants and prisoners, promotion of women and youth leaders in community-based conflict management mechanisms.

 Kayes, Mopti, Koulikoro, Timbuktu, Bamako, Gao, Sikasso, Kidal, Segou

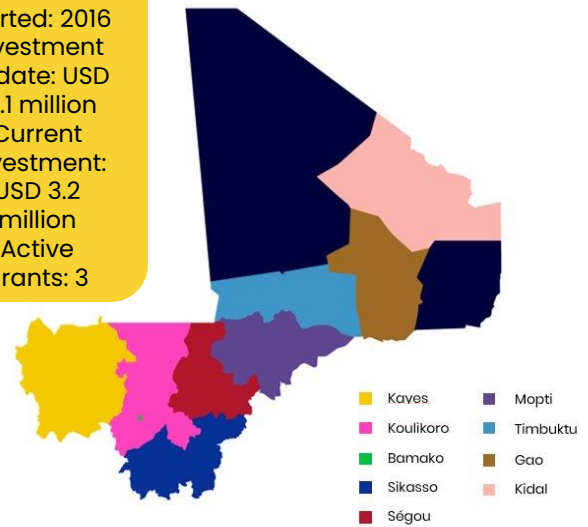
 Women, youth, religious and traditional leaders, farmers and herders, students, and local authorities.

 2016-2024

 GCERF in Mali works with the government, through the country support mechanism, and bilateral and multilateral donors to ensure a coordinated approach to prevention.

Current investment

Investment started: 2016
Investment to date: USD 10.1 million
Current investment: USD 3.2 million
Active grants: 3



Portfolio overview as of June 2024

Think Peace

2022-24 | Principal Recipient with 2 sub-recipients

- ❖ Conflict resolution structures, reintegration of ex-detainees and ex-combatants; creating community action plans for PVE; improving political participation and economic opportunities for youth and women and improving access to basic services for communities; emergency programme.

Initiatives Conseil Développement Mali (ICD-Mali)

2022-24 | Principal Recipient with 2 sub-recipients

- ❖ Improving pastoral resilience through infrastructure investment, local management mechanisms for natural resources and conflicts, and establishment of a credit and savings collective.

Femmes et Développement, Mali

2023-24 | Principal Recipient with 3 sub-recipients

- ❖ Capacity building of community mechanisms to strengthen social cohesion; information and communication campaign through local radio stations to overcome the lack of knowledge about extremist ideology; support the economic insertion of women and youth.

Violent Extremism in Mali: Drivers

Youth unemployment:
17.4% of youth aged 15-24 are unemployed, making them vulnerable to material incentives from VE groups (ILOSTAT data for 2020)

Human trafficking and modern slavery are on the rise in Mali. Victims of these human rights abuses are more vulnerable to radicalisation (Sourced from grantee reports)

Governance-related grievances: VE groups thrive on the weakened state power, acting as a replacement for legitimate authorities by offering protection and essential services (sourced from donor report)

3rd

On the Global Terrorism Index 2024

Current Programming: Systems Approach

GCERF intervention in Mali is part of the wider Sahel strategy that engages with intergovernmental bodies to promote regional cooperation in the nexus of development and security. Our programming in the region cover Burkina Faso, Chad, Mali, Mauritania and Niger, and our engagement directly bolster the implementation of National Action Plans of the five countries working in partnership with local, national, regional, and global partners.

GCERF's strategy for engagement in the Sahel region is built around two strategic objectives:

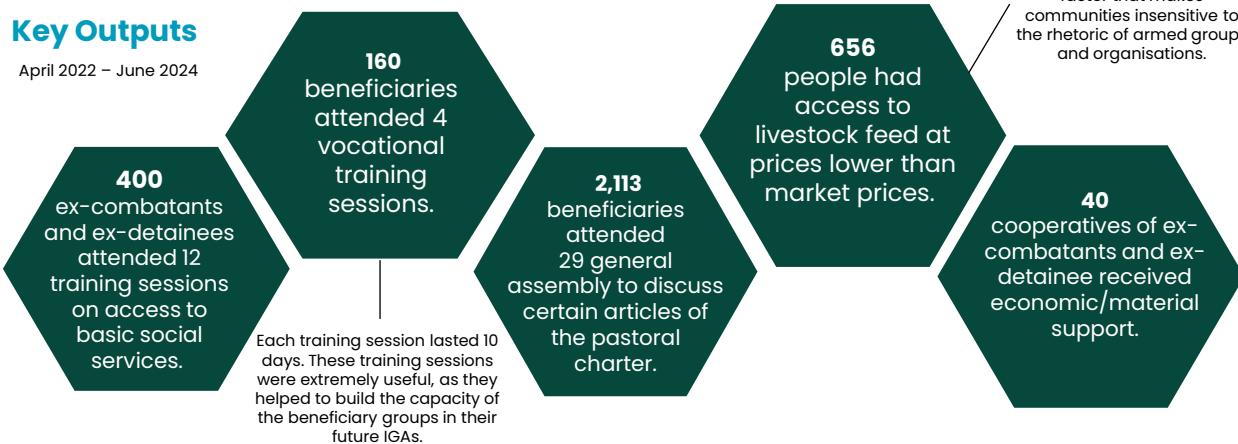
To contribute to improvements in the social ecology to create conditions conducive to prevention and resilience-building.

To facilitate community-led rehabilitation, disengagement, and (re)integration, including people disengaging from criminal, non-state armed, and violent extremist groups.

GCERF will mobilise and invest up to USD 10 million – in the Sahel region – to meet these objectives in a minimum period of three years. GCERF will prioritise resilience and prevention programming, including cross-border projects, that meet these objectives – all within the scope of regional and national NAPs and equivalents in order to achieve its overarching objective of supporting stability and resilience.

Key Outputs

April 2022 – June 2024



Total beneficiaries

January 2017 – June 2023

Direct
680,183
Indirect
4 m

Key achievements

January 2023 – June 2024

30 survivors were identified on a voluntary basis to take part in setting up the recreational programme. Most of the survivors have made enormous progress since the discussion groups were set up, in which that they can discuss and exchange in a relaxed atmosphere with each other. For most of the survivors, the time has come to move beyond a painful past and look to the future, with ideas for projects and ambitions for their families.

Thanks to the general assemblies held to disseminate the pastoral charter, the local authorities and communities are informed about animal access to watering points and bridle paths, animal roaming, conflict management between farmers and herders, the dissemination of the pastoral charter and its implementing decree, and group watering of animals in accordance with the charter.

15 initiatives were carried out with significant participation by young people, women and ex-combatants with 334 people taking part. A monitoring and support committee for internally displaced persons (IDPs) has been set up in one locality and these initiatives were crucial in raising participants' awareness of their responsibility as players in promoting community stability.

"Many of these women spent all their time dwelling on the past, lamenting and despairing at the beginning, but today it's completely the opposite, they are more willing to talk about the future, hope and renewal".

- A women facilitator of a discussion group for women survivors.

Story of Change

As part of its awareness-raising initiatives, Think Peace supervised a theatrical performance on the theme of conflict between herders and farmers in Koro. Below are a few testimonials:

"My name is Ousmane, a farmer. This theatre has been a transformative experience for me. As a farmer, the realistic portrayal of the tensions with livestock breeders has had a profound effect. The theatre gave us the opportunity to share our points of view, to understand each other's concerns and, above all, to contribute to the search for solutions. Taking an active part in the conclusion strengthened my sense of belonging to the community and convinced me that open dialogue is the key to resolving our conflicts constructively".

Another participant in the Koro initiative, Amadou: "As a livestock farmer, this theatre was a revelation. The actors were able to capture the challenges we face on a daily basis and created a space where we could express our concerns. The most rewarding part was the resolution phase where we were invited to suggest alternatives. This showed me that, even in complex situations, solutions can emerge when we work together. This theatre has instilled a sense of trust in the community and convinced me of the importance of working together for a harmonious future between farmers and breeders".



"We're happy because we used to carry weapons and think we could solve everything with weapons. We were technically enemies of our own communities by wanting to defend them from their enemies. But today, it is us who are repentant and armed for having laid down our arms and faced up to the stabilisation of our community as bearers of the message of peace".

An ex-combatant, involved in informal forums for exchanging and sharing experiences with local authorities in Bankass



GCERF's Added Value



GCERF focuses on **building institutional capacity** e.g., CSOs, and government agencies.



GCERF invests in building a PVE-focused **community of practice** with CSOs, government agencies, and experts



Communities are at the **forefront of project design and implementation**, and the programme works with existing community structures for sustainability



All project design and implementation are done in coordination with NCTC, leading to **nationally-aligned**, locally-led programmes



GCERF connects CSOs, communities, and other stakeholders with government and security actors, leading to **better coordination** and relationships



GCERF's consortium model and capacity-building approach enables us to work in **remote areas**

Find out more about becoming an investor, our work, and the collective impact we make at: www.gcerf.org
contact.sahel@gcerf.org



@gcerf



GCERF



@thegcerf



GCERF Outreach