

GCERF works with the government of Burkina Faso to **implement joint strategies** and invests in local organisations that design and run programmes improving stability and resilience.

GCERF-funded activities **engage local stakeholders** to support and **strengthen the capacity of communities** to mobilise, organise and effectively engage with their members and local authorities on resilient pastoralism, sustainable economic opportunities, conflict prevention, child protection, and psychosocial support to victims of violent extremism (VE).

Investment Focus



Increase resilience of youth and women to the risks of violent radicalisation and extremism, strengthen local conflict resolution mechanisms.



Lorum, Passore, Yatenga, Zondoma provinces (Northern region), Ouadalan, Seno, Soum, Yagha provinces (Sahel region)



Pastoralists and farmers, Internally Displaced Persons, and host communities, traditional and religious leaders, unemployed men and women (aged 15-25), vulnerable children (aged 7-18).



2021 – 2025



We work with the government, through the Country Support Mechanism, and bilateral and multilateral donors to ensure a coordinated approach to prevention of violent extremism in Burkina Faso.

Current investment

- Burkina Faso
- Sahel Region
- Nord Region



Investment started: 2022
Investment to date: USD 3.75 million
Current investment: USD 3.75 million
Active grants: 4

Portfolio overview as of June 2024

Union Fraternelle des Croyents de Dori (UFC-Dori)

2022-24 | *Principal Recipient with 2 sub-recipients*

- ❖ Addressing farmer-herder conflicts through local conflict prevention and dialogue mechanisms strengthening, and awareness-raising of land regulations among communities. Improved resilience through the promotion of alternative discourses, the creation of socioeconomic opportunities, and psychosocial support to victims of VE groups.

Réseau Afrique Jeunesse (RAJ)

2022-24 | *Principal Recipient with 2 sub-recipients*

- ❖ Improving the management of natural resources to reduce local conflicts; strengthening local conflict resolution and dialogue mechanisms; IGPs to improve socio-economic opportunities for young pastoralists and IDPs. Monitoring cases of discrimination and early signs of radicalization.

Réseau de Communication sur le Pastoralisme (RECOPA)

2023-25 | *Principal Recipient with 1 sub-recipient*

- ❖ Support agropastoral communities in the Sahel and the North in the prevention of inter-community conflicts; improving social cohesion through spaces for dialogue and support youth and women in socioeconomic opportunities.

KEOOGO

2023-25 | *Principal Recipient with 2 sub-recipients*

- ❖ Engaging with judicial actors and local leaders to strength the protective ecosystem of at-risk children and victims of violence and increase their resilience to violent radicalization; supporting the socio-professional reintegration of girl and boy victims of violence; establishment of communication channels to facilitate children's complaints.

Violent Extremism in Burkina Faso: Drivers

Youth unemployment and radicalisation

Lack of sustainable economic opportunities and radicalisation make children and young people vulnerable to violent extremist groups, which offer alternative material incentives.

Farmer/herder conflicts

These conflicts over land, access and exploitation of natural resources, lead to increased tensions within communities

Governance-related grievances

Violent extremist groups exploit an institutional vacuum resulting from the political context to increase their presence on the ground

1st

On the Global
Terrorism Index
2024

Current Programming: Systems Approach

GCERF intervention in Burkina Faso is part of the wider Sahel strategy that engages with intergovernmental bodies to promote regional cooperation in the nexus of development and security. Our programming in the region cover Burkina Faso, Chad, Mali, Mauritania and Niger, and our engagement directly bolster the implementation of National Action Plans of the five countries working in partnership with local, national, regional, and global partners.

GCERF's strategy for engagement in the Sahel region is built around two strategic objectives:

To contribute to improvements in the social ecology to create conditions conducive to prevention and resilience building.

To facilitate community-led rehabilitation, disengagement, and (re)integration, including people disengaging from criminal, non-state armed, and violent extremist groups.

GCERF will mobilise and invest up to USD 10 million – in the Sahel region – to meet these objectives in a minimum period of three years. GCERF will prioritise resilience and prevention programming, including cross-border projects, that meet these objectives – all within the scope of regional and national NAPs and equivalents in order to achieve its overarching objective of supporting stability and resilience.

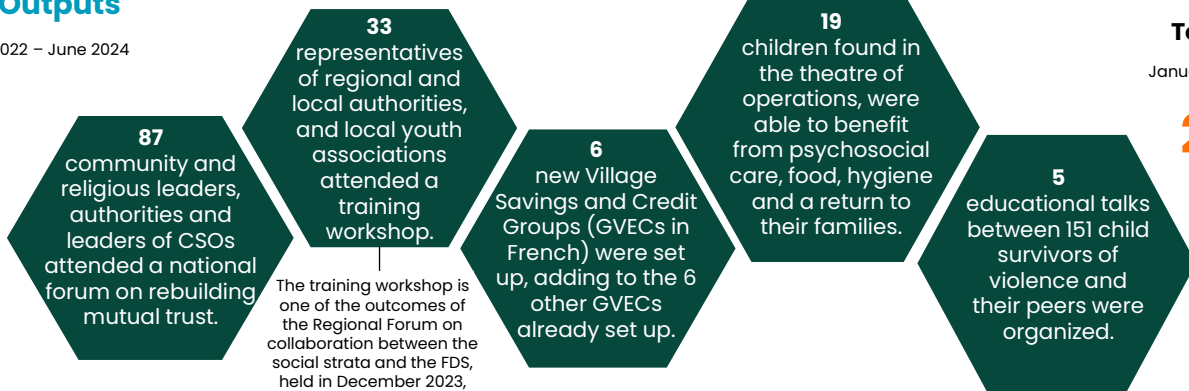
Key Outputs

January 2022 – June 2024

Total beneficiaries

January 2023 – December 2023

20,354



The training workshop is one of the outcomes of the Regional Forum on collaboration between the social strata and the FDS, held in December 2023, which planned to train members of the local offices of the Conseil Régional de la Jeunesse du Nord (CRJ-Nord) in PVE.

Key achievements

January 2022 – June 2024



A **regional forum** on collaboration has brought together 62 representatives of civil society and the Defence and Security Forces (FDS), with the aim of strengthening the cohesion of the communities in the Sahel region to combat violent extremism. The link to the media report is available [here](#).



Psychosocial support for survivors of violent extremism continued, with results consolidating as the programme progressed. Beneficiaries were able to strengthen their resilience in the face of stress and how to deal with it. Symptoms of post-traumatic stress have become rare, and some survivors demonstrate renewed self-confidence and a willingness to improve interpersonal relationships.



A **legal caravan** was held in Gourcy, bringing together the authorities of the special delegation, the Directors of the decentralised State technical services, the customary and religious authorities, and the representatives of the CSOs and the living forces of the commune, the FDS, the host populations and the IDPs. More than 500 participants left better informed about the application provisions of law 034 on rural land tenure.



2,510 homeless, disabled, and unprotected children, including 273 Quranic pupils were able to acquire personal and social skills in 49 educational and 21 self-protection sessions, enabling them to be more resilient in the face of potentially radicalising messages and dynamics, and to ensure their self-protection against the ambitions of extremist groups.

“ Women here don't have access to land and their husbands prevent them from carrying out an Income-Generating Activity (IGA). This awareness-raising campaign gave me more impetus and strength to convince my husband to let me start an IGA. He agreed and today I'm almost financially independent from him, I contribute to the household expenses.”

Balkissa, a participant in the awareness-raising session on the financial empowerment of women

Story of Change

As part of the activities of the project implemented by the consortium led by KEOOGO, a 17-year-old girl from the rural commune of Lankoué in the Boucle du Mouhoun region, neighbouring the North region, who is a victim of terrorism and a beneficiary of vocational training support, did not hide her satisfaction when she shared her story below.

"My name is O.S., I'm 17 years old and I come from Rasouli in the commune of Lankoué. I was shocked when I saw my grandfather killed in a terrorist attack in my home village. It was a traumatic experience that I wouldn't wish on even my enemy. My village was destroyed, the market ransacked and the school set on fire. The population was ordered to leave the village within 48 hours and we ended up in Gourcy.

Following this event, I no longer wanted to go to school because my parents had lost everything, and my father was devastated by the sudden departure of his father (my grandfather). So, I decided to look for work to help my family. But it really wasn't easy. I was an apprentice in a sewing workshop, but I wasn't learning anything because I didn't have enough materials. But I had no choice, at least they gave me something to eat.

Thanks to the precious help of AJBF through the project and its partner, I've been lucky enough to be enrolled on a vocational training course in dressmaking. For me, sewing is a real passion and a way of rebuilding my life. Today, I'm proud to say that I'll be a qualified seamstress and that I can look forward to a better future. I'm grateful to everyone who supported me and I'm determined to use my future sewing skills to inspire other children to find their own path to success.

I want my story to serve as a reminder that we need your support to rebuild our lives so that we can continue to learn and grow despite the trauma we have suffered."



School supplies for pupils, Dori



Educational sessions for street children, disabled children and children travelling unaccompanied. Photo by KEOOGO.

A woman participant in group therapy **on the psychosocial support provided by UFC-Dori :**

"Accepting my husband's execution for no apparent reason destroyed me. I was also worried about bringing up my children. Alone and without knowledge, I felt lost. When I arrived, I found it difficult to eat and couldn't close my eyes. Sadness was the order of the day. At the beginning of the support, I was at a loss for words and just cried. But since we've been following the project's activities, I can now eat, sleep and even talk. If you had to choose between what the project has provided and food, it would be wise to prioritise psychosocial support before looking for food, because you can have food without having an appetite."

GCERF's Added Value



GCERF focuses on **building institutional capacity** e.g., CSOs, and government agencies.



GCERF invests in building a PVE-focused **community of practice** with CSOs, government agencies, and experts



Communities are at the **forefront of project design and implementation**, and the programme works with existing community structures for sustainability



All project design and implementation are done in coordination with NCTC, leading to **nationally-aligned, locally-led programmes**



GCERF connects CSOs, communities, and other stakeholders with government and security actors, leading to **better coordination and relationships**



GCERF's consortium model and capacity-building approach enables us to work in **remote areas**