

Since 2016, GCERF has fulfilled its initial commitment of investing three times in a country. GCERF's last round of investment began in July 2022 and will continue until June 2024. The grant closing event, titled, *Prevention of Violent Extremism in Bangladesh: Graduation and Sustainability Summit* were organized in May 2024 in collaboration with the Ministry of Foreign Affairs. This round of investment focuses on enhancing the sustainability of the existing activities particularly, youth clubs and digital literacy. These efforts are contributing to fostering a positive sense of purpose and increased community agency.

**Investment Focus**



Building resilience against violent extremism by supporting youth platforms to ensure financial and existential sustainability; strengthening the advocacy and fundraising capacity of grantees and youth groups.



Chattogram – Cox’s Bazar, Greater Dhaka, Rajshahi, Khulna



Secondary school and madrasa students; University-level students; out-of-school and unemployed youth; virtual youth; Religious and Community Leaders; and Governance Actors.



2016-2024



GCERF in Bangladesh works in collaboration with the Ministry of Foreign Affairs, Ministry of Religious Affairs and other local government authorities, and the United Nations country team.

**Current investment**

- Chattogram; Cox’s bazar
- Greater Dhaka; Dhaka
- Khulna; Satkhira
- Rajshahi; Chapai-Nawabganj



**Portfolio overview as of June 2024**

**Rupantar**

2016-24 | *Principal Recipient with 5 sub-recipients*

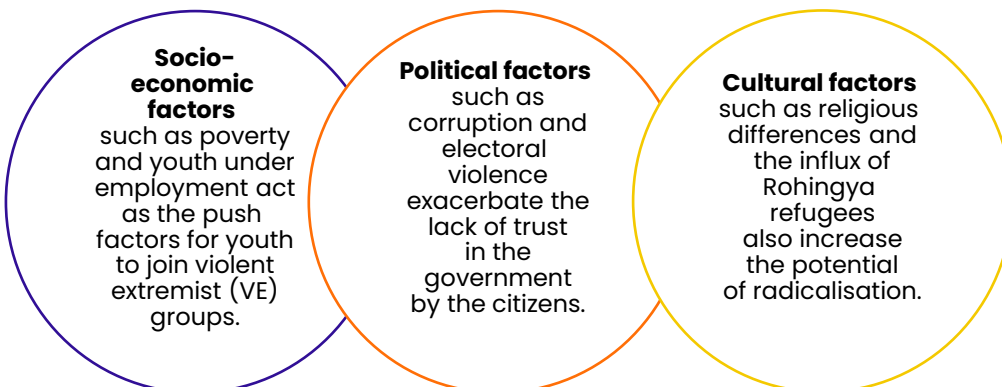
- ❖ Established and ran peace clubs. Provided leadership, digital, and critical thinking skills to youth (including those in university and madrasas) and raised awareness on PVE.

**Youth Power in Social Action (YPSA)**

2016-24 | *Direct grantee*

- ❖ Established and trained youth platforms; held community engagement events and fostered social cohesion, and established and ran women’s courtyard platforms.

**Violent Extremism in Bangladesh: Drivers**



**32nd**

On the Global  
Terrorism Index  
2024

**Current Programming: Systems Approach**

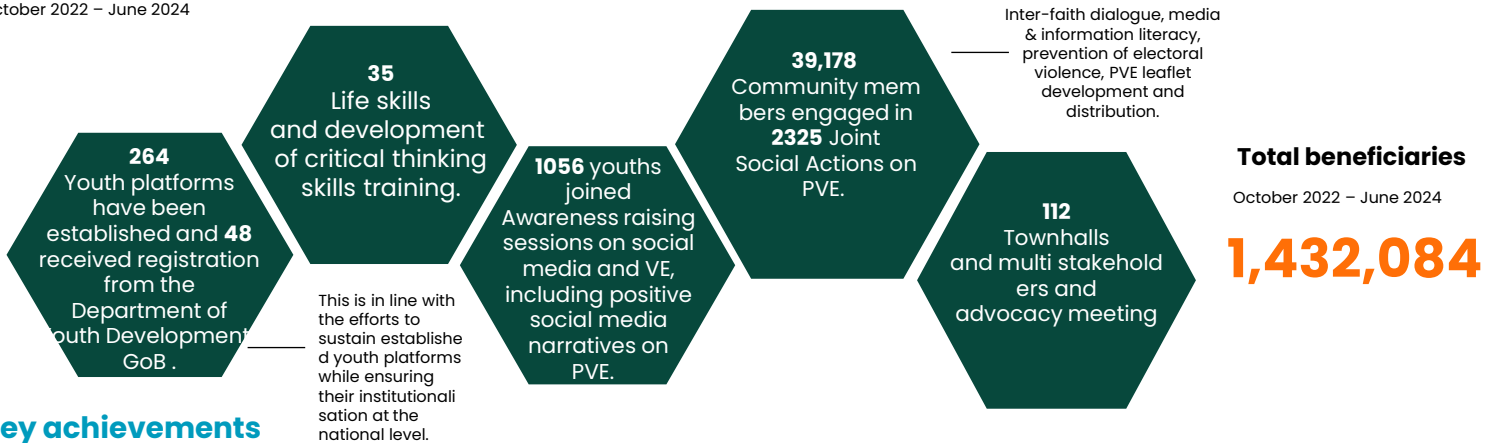
**National:** Advocating for the mainstreaming of preventing/countering violent extremism (P/CVE) into national policies. Institutionalisation and ensuring the sustainability of youth PVE/peace platforms.

**Community:** Promoting community-wide efforts at preventing VE through multiple community-level stakeholders' (youth, women, religious leaders, etc.) engagement and dialogue to build PVE capacity and raise awareness.

**Individual:** Building the individual's quest for social cohesion and tolerance, improving youth's critical thinking and sense of purpose and increasing digital literacy.

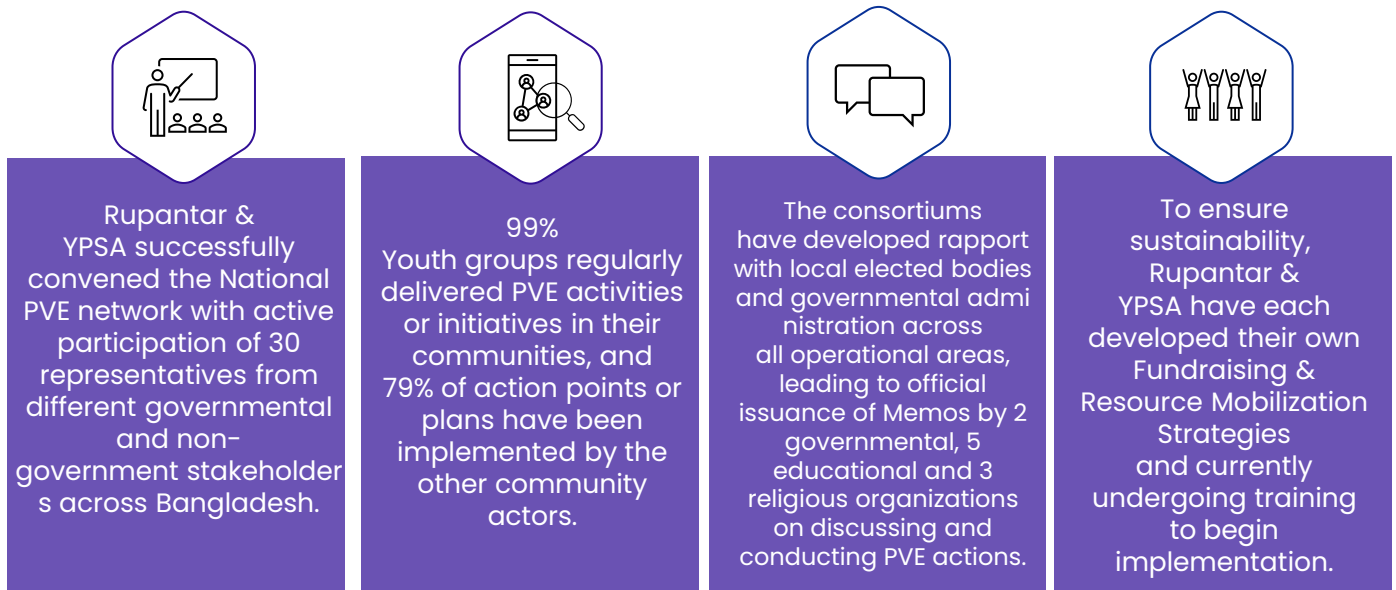
**Key Outputs**

October 2022 – June 2024



**Key achievements**

October 2022 – June 2024



During Q3-Q4 2023, PEACE Consortium implemented 44 Joint Social Actions through 1690 members of 149 Peace clubs along with 283 community representatives:

“Successfully we have implemented our joint social actions getting the authority support; which is essential for spreading social cohesion.”

- Achiya Khatun, Peace Club Member, Satkhira

## Story of Change – Transforming Hearts: Monk Sree Taposh Sen's Journey in PVE

In the serene setting of Rajarkul Union Historical Rangkut Buddhist temple, nestled in the heart of Cox's Bazar, a silent revolution unfolds. At the forefront of this transformation stands Monk Sree Taposh Sen, the revered residential chief of the temple. Monk Sree Taposh Sen's journey towards PVE began in November 2019 when he joined the YPSA CEVEC project as a religious leader of Ramu. Initially uncertain about the nuances of violence and extremism, Monk Sree Taposh Sen's understanding deepened through orientation and training provided by YPSA CEVEC, leading to an increase in his commitment to safeguarding his community against the dangers of anomy, smuggling, and terrorist activities.

Driven by a sense of duty, Monk Sree Taposh Sen embarked on a mission to spread awareness and understanding of peace. He engaged in dialogue with fellow monks and followers during each sermon, urging them to disseminate the messages of PVE to their acquaintances and practitioners, fostering a culture of resilience against VE and promoting brotherhood among all. Reflecting on his journey, Monk Taposh expressed, **"I received training and information on PVE from the YPSA CEVEC project, and I shared these insights with my fellow monks. I urged them to disseminate these messages to their followers and practitioners. Furthermore, I engaged in discussions about this issue with my followers and practitioners, and I am committed to continuing these efforts."**

Monk Sree Taposh Sen's advocacy for peace and unity reverberates beyond the temple walls, inspiring the larger community to join the cause, as he continues to plant the seeds of change, nurturing a future where violence and extremism hold no sway.



PVE messages are delivered during the Regular sermon in the Buddhist temple in Cox's Bazar.



Youth Forum members distribute leaflet and disseminate PVE messages in Tourism Fair in Cox's Bazar.

Peace clubs established by Rupantar conducts inter-faith dialogue, campaign against online misinformation, courtyard meeting, medical camp, cycle rally, reading corner, debate competition, wall painting, leaflet development and distribution etc. engaging youths, local government representatives, religious leaders and activists :

*"It is the best initiative for promoting social cohesion in the society by empowering the youth dividends on PVE issues. In this intervention, we are always here to support them."*

- Amitabha Bissas, Youth Development Officer, Khulna City Corporation

## GCERF's Added Value in Bangladesh



GCERF focuses on **building institutional capacity** e.g., CSOs, and government agencies.



GCERF invests in building a PVE-focused **community of practice** with CSOs, government agencies, and experts



Communities are at the **forefront of project design and implementation**, and the programme works with existing community structures for sustainability



All project design and implementation are done in coordination with **nationally-aligned**, locally-led programmes



GCERF connects CSOs, communities, and other stakeholders with government and security actors, leading to **better coordination** and relationships



GCERF's consortium model and capacity-building approach enables us to work in **remote areas**

Find out more about becoming an investor, our work, and the collective impact we make at: [www.gcerf.org](http://www.gcerf.org)  
[contact.bangladesh@gcerf.org](mailto:contact.bangladesh@gcerf.org)



**GCERF**  
 Geneva, Switzerland